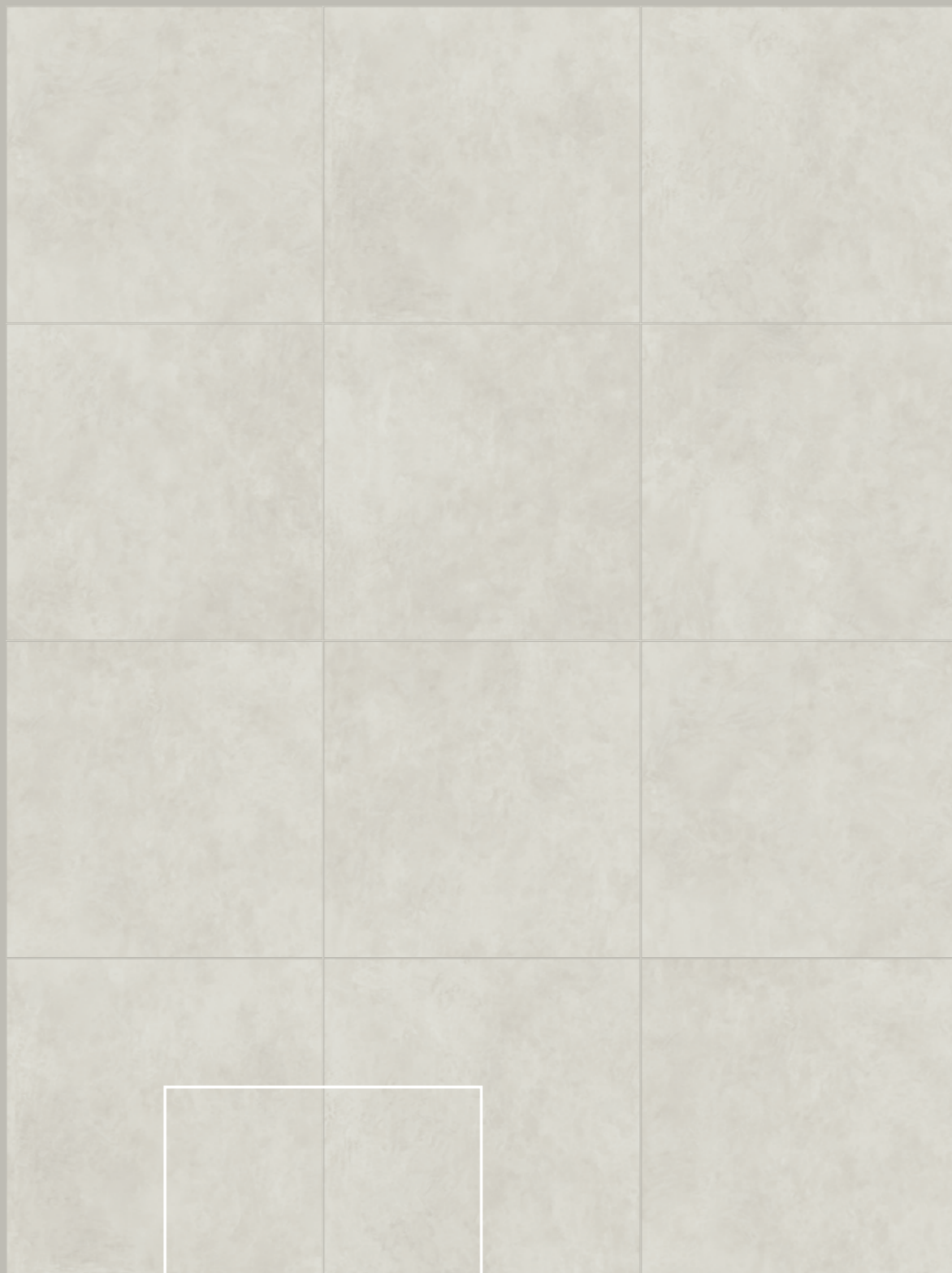


120 X 120

SPATULA WHITE

120x120 cm  
48" x 48"

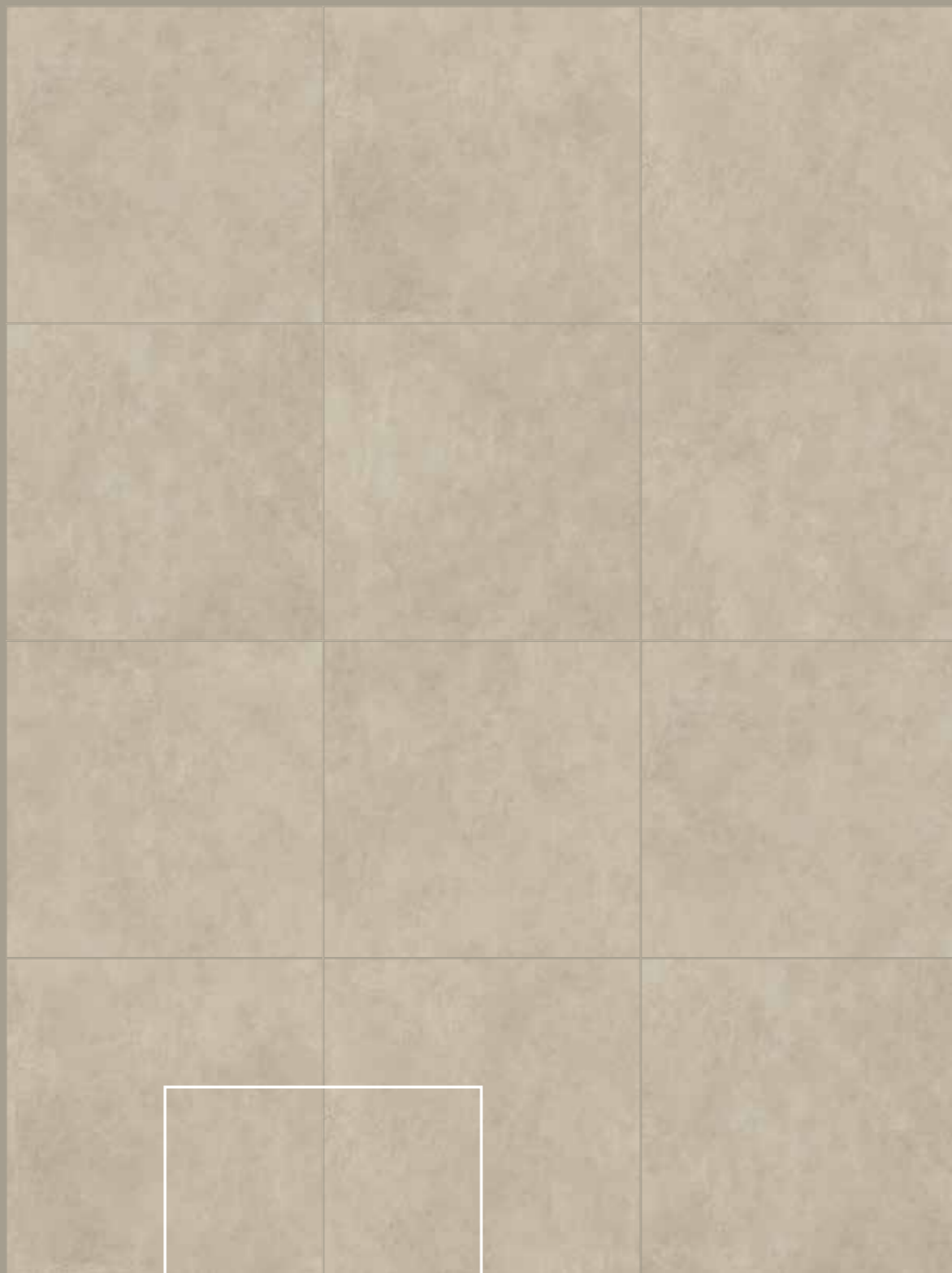


GRES PORCELLANATO RETTIFICATO  
RECTIFIED PORCELAIN STONEWARE



SPATULA BONE

120x120 cm  
48" x 48"

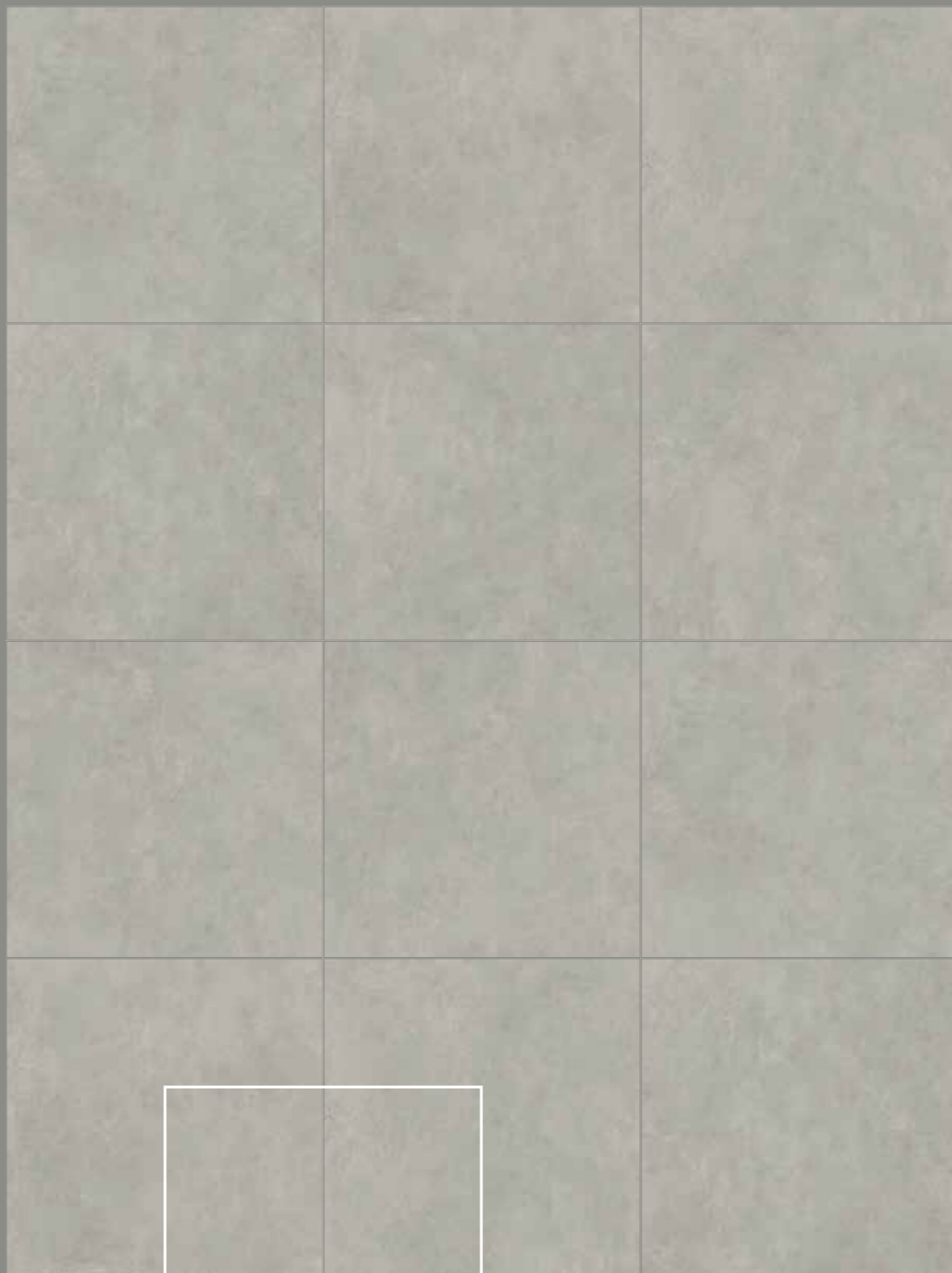


GRES PORCELLANATO RETTIFICATO  
RECTIFIED PORCELAIN STONEWARE



SPATULA GREY

120x120 cm  
48" x 48"

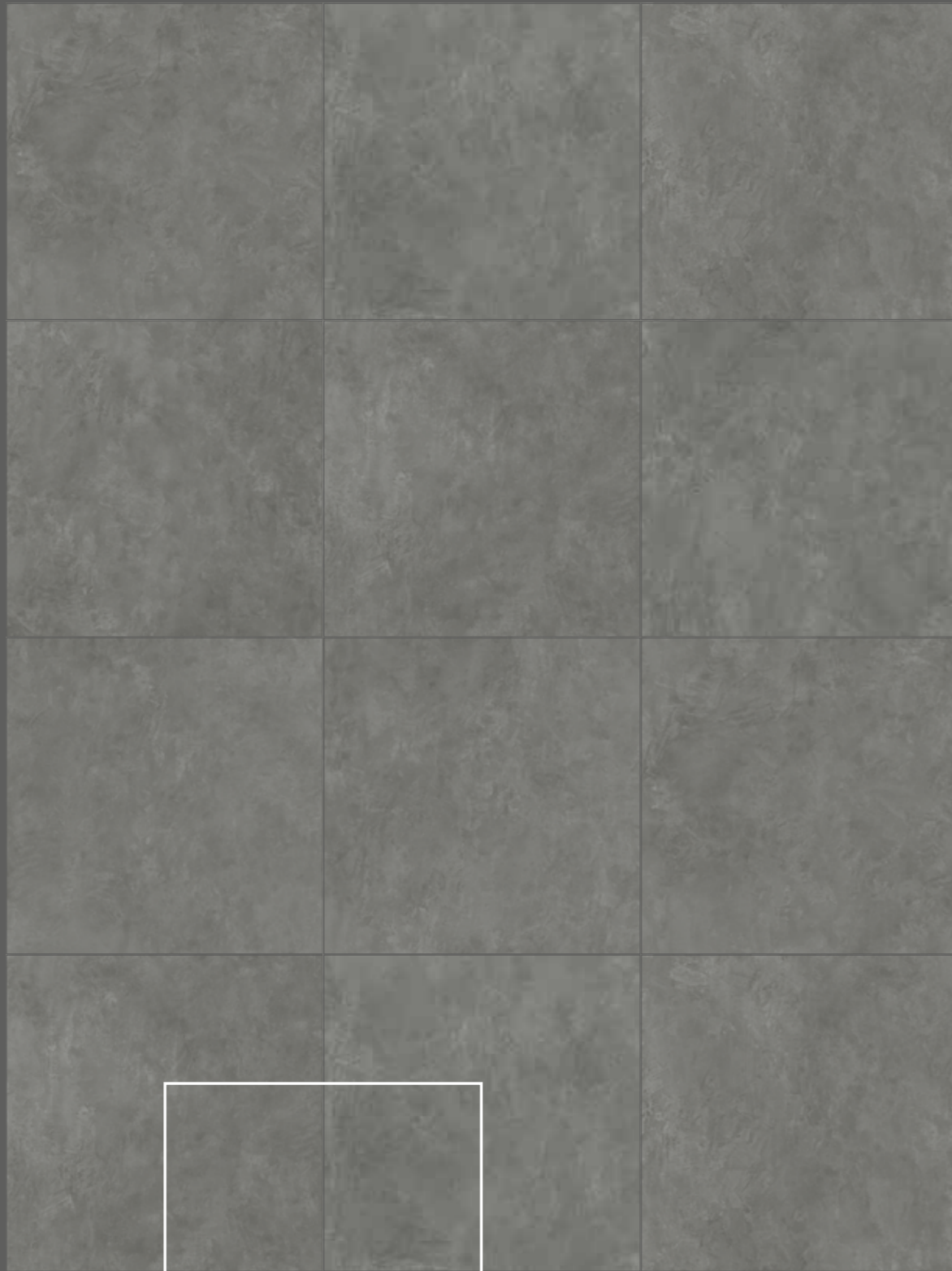


GRES PORCELLANATO RETTIFICATO  
RECTIFIED PORCELAIN STONEWARE



**SPATULA ANTRACITE**

120x120 cm  
48" x 48"



GRES PORCELLANATO RETTIFICATO  
RECTIFIED PORCELAIN STONEWARE



SOUL WHITE

120x120 cm  
48" x 48"



GRES PORCELLANATO RETTIFICATO  
RECTIFIED PORCELAIN STONEWARE



SOUL IVORY

120x120 cm  
48" x 48"



GRES PORCELLANATO RETTIFICATO  
RECTIFIED PORCELAIN STONEWARE



SOUL GREY

120x120 cm  
48" x 48"



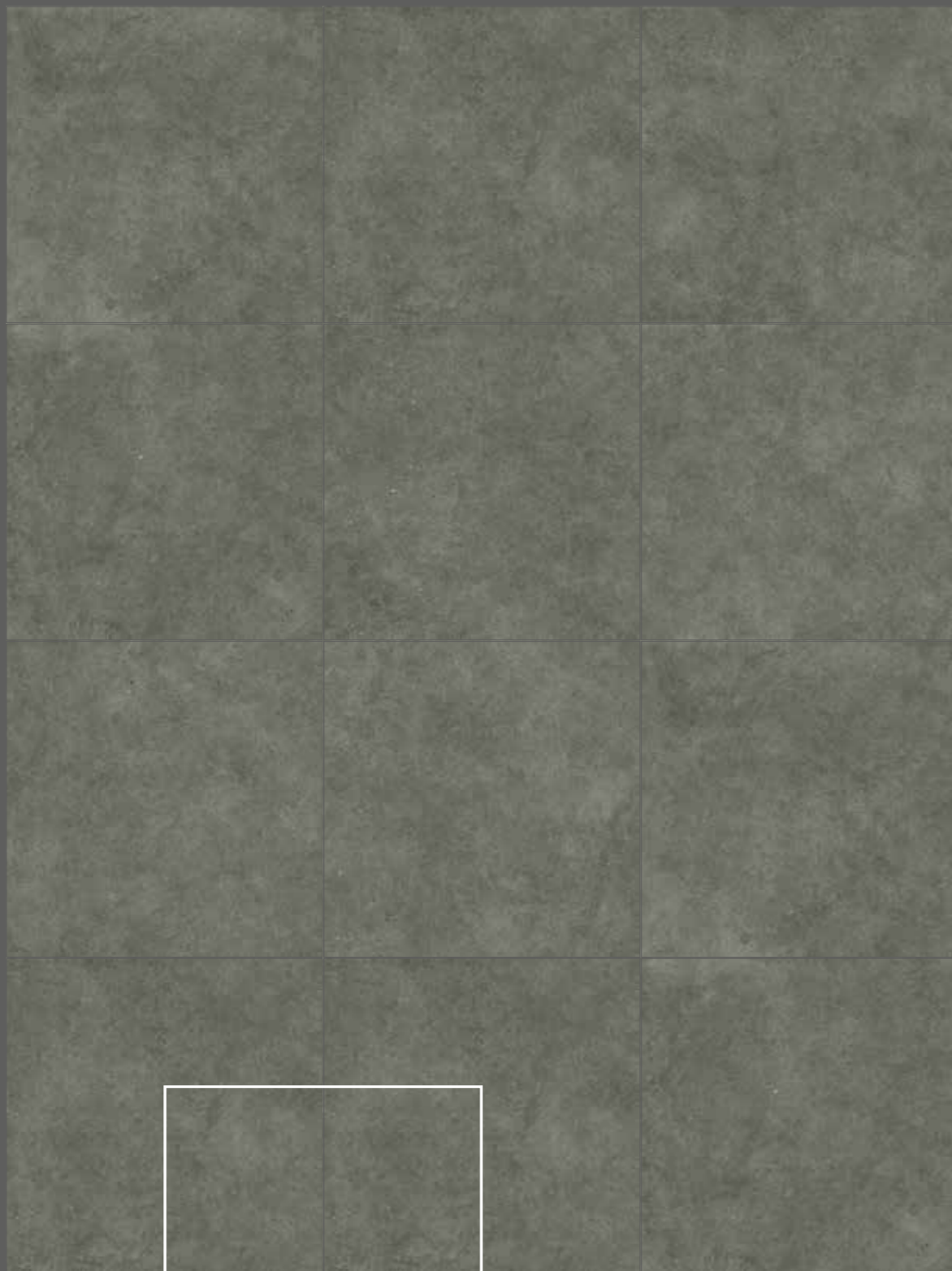
GRES PORCELLANATO RETTIFICATO  
RECTIFIED PORCELAIN STONEWARE





**SOUL SMOKE**

120x120 cm  
48" x 48"



GRES PORCELLANATO RETTIFICATO  
RECTIFIED PORCELAIN STONEWARE



120x120 cm  
48" x 48"  
±9mm

**R10**  
GRES PORCELLANATO RETTIFICATO  
RECTIFIED PORCELAIN STONEWARE

## SPATULA COLLECTION



**SPAWH120**  
SPATULA WHITE  
8 Printings 155



**SPABO120**  
SPATULA BONE  
8 Printings 155



**SPAGR120**  
SPATULA GREY  
8 Printings 155



**SPAAN120**  
SPATULA ANTRACITE  
8 Printings 155

## SOUL COLLECTION



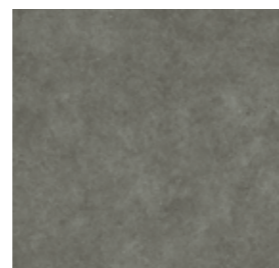
**SOUWH120**  
SOUL WHITE  
8 Printings 155



**SOUIV120**  
SOUL IVORY  
8 Printings 155



**SOUGR120**  
SOUL GREY  
8 Printings 155

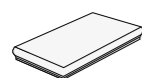


**SOUSM120**  
SOUL SMOKE  
8 Printings 155

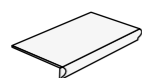
## PEZZI SPECIALI . TRIM TILES



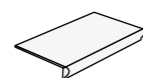
**BATTISCOPA**  
SKIRTING  
6x60 2.4"x24"  
14 PZ  
15x



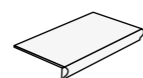
**GRADINO \***  
STEP  
33x120 13"x48"  
265 PZ  
2x



**ANGOLARE \***  
DESTRA  
33x120 13"x48"  
278 PZ  
2x



**ANGOLARE \***  
SINISTRA  
33x120 13"x48"  
278 PZ  
2x



**ANGOLARE \***  
DESTRA - SINISTRA  
33x120 13"x48"  
303 PZ  
2x

\* Disponibile solo su ordinazione . Available on demand

	pcs/box	mq/box	kg/box	box/pallet	mq/pallet	kg/pallet
120x120 48"x48" Rettificato Rectified	2	2,88	55,90	18	51,84	1006,20

## CARATTERISTICHE TECNICHE . TECHNICAL FEATURES

Norma Di Riferimento / Specification Reference UNI EN 14411/ISO 13006 Appendice G Bla GL

Caratteristica tecnica Technical feature	Norma Norm	120X120	
		spatula	soul
LUNGHEZZA E LARGHEZZA LENGTH AND WIDTH		CONFORME IN ACCORDANCE	
SPESSORE THICKNESS		CONFORME IN ACCORDANCE	
RETTILINEITÀ SPIGOLI STRAIGHTNESS OF SIDES		CONFORME IN ACCORDANCE	
ORTOGONALITÀ RECTANGULARITY	UNI EN ISO 10545-2	CONFORME IN ACCORDANCE	
PLANARITÀ SURFACE FLATNESS		CONFORME IN ACCORDANCE	
ASPETTO ASPECT		CONFORME IN ACCORDANCE	
ASSORBIMENTO D'ACQUA WATER ABSORPTION	UNI EN ISO 10545-3	≤ 0,5%	
RESISTENZA A FLESSIONE FLEXURAL STRENGTH		≥ 35 N/mm <sup>2</sup>	
MODULO DI ROTTURA BREAKING STRENGTH	UNI EN ISO 10545-4	≥ 1300 N	
DETERMINAZIONE DELLA RESISTENZA ALL'URTO DETERMINATION OF IMPACT RESISTANCE	UNI EN ISO 10545-5	0,90	
RESISTENZA ALL'ABRAZIONE (METODO PEI) ABRASION RESISTANCE (PEI-METHOD)	UNI EN ISO 10545-7	DA 3 A 5 IN BASE AL COLORE FROM 3 TO 5, ACCORDING TO COLOR	
COEFFICIENTE DI DILATAZIONE TERMICA LINEARE THERMAL EXPANSION COEFFICIENT	UNI EN ISO 10545-8	(5,7±5,9) X 10 <sup>-6</sup> /°C	
RESISTENZA AGLI SBALZI TERMICI THERMAL SHOCK RESISTANCE	UNI EN ISO 10545-9	RESISTENTE RESISTANT	
DETERMINAZIONE DELLA DILATAZIONE DOVUTA ALL'UMIDITÀ DETERMINATION OF MOISTURE EXPANSION	UNI EN ISO 10545-10	0,0 mm/m	
DETERMINAZIONE DELLA RESISTENZA AL CAVILLO DETERMINATION OF CRAZING RESISTANCE	UNI EN ISO 10545-11	RESISTENTE RESISTANT	
RESISTENZA AL GELO FROST RESISTANCE	UNI EN ISO 10545-12	INGELIVO FROST-RESISTANT	
RESISTENZA AGLI AGENTI CHIMICI RESISTANCE TO CHEMICALS	UNI EN ISO 10545-13	MINIMO CLASSE B MINIMUM CLASS B	
RESISTENZA ALLE MACCHIE STAIN RESISTANCE	UNI EN ISO 10545-14	MINIMO CLASSE 3 MINIMUM CLASS 3	
RESISTENZA ALLO SCIVOLAMENTO SLIP RESISTANCE	DIN 51130 C.o.F.B.C.R./D.M. 236 14/6/89 D.C.o.F / ANSI A326.3	R10 μ > 0,40 > 0,42	
REAZIONE AL FUOCO REACTION TO FIRE	96/603/CE	A1 <sub>FL</sub> /A1	



**CERAMICA EURO S.p.A.**

Via Radici Nord, 164 - 42014 Castellarano RE Italy

Tel +39 0536 825202 - Fax +39 0536 825210 - [info@cereuro.it](mailto:info@cereuro.it) - [www.cereuro.it](http://www.cereuro.it)